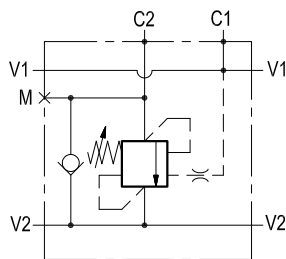


Single counterbalance

A-VBSO-SE-30-FC2-PI-PL

08.39.60 - X - Y - Z

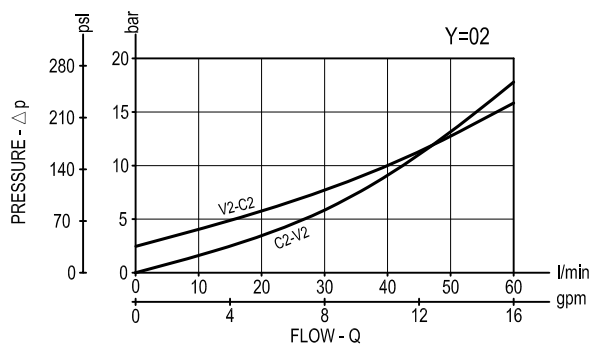


Description

When pressure at V2 rises above the spring bias pressure, the check seat is pushed away from the piston and flow is allowed from V2 to C2. When load pressure at C2 rises above the pressure setting, the direct operated relief function is activated and flow is relieved from C2 to V2. With pilot pressure at V1-C1, the pressure setting is reduced in proportion to the stated ratio of the valve, until opening and allowing flow from C2 to V2. The spring chamber is drained to V2, and back-pressure at V2 is additive to the pressure setting in all functions. For better safety and compact assembly, the C1 and C2 ports are gasket mounted directly on the actuator.

Note: port identified with M are not protected with calibrated orifice but in direct connection with pressure channels.

Performance



Technical data

Hydraulic

Max. operating pressure	bar (psi)	350 (5000)
Max. flow	l/min (gpm)	60 (16)

Relief setting: at least 1.3 times the load induced pressure.

For higher stability at all flows and pressures, the pilot line includes hydraulic damping

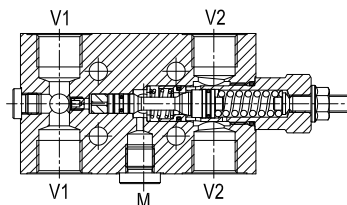
General

Manifold material	Steel
Weight	see "Dimensions"
Fluid temperature range	°C (°F) between -30 (-22) and +100 (212)
Other technical data	see data sheet RE 18350-50

Note: for applications outside these parameters, please consult us.

[illegible]

[mm (inches)]



17.5 (0.69)	34.5 (1.36)	36 (1.42)	36 (1.42)	39 (1.54)	18 (0.71)	89.5 (3.52)	109 (4.29)	10.14 (0.35)	47 (1.85)	6 (0.24)	30 (1.18)	65 (2.56)	8.5 (0.34)		G 1/2	1.75 (3.86)
15 (0.59)	29.5 (1.16)	36 (1.42)	36 (1.42)	39.3 (1.55)	18 (0.71)	88.3 (3.48)	109 (4.29)	10.14 (0.35)	47 (1.85)	6 (0.24)	30 (1.18)	55 (2.17)	8.5 (0.34)		G 3/8	1.24 (2.73)
S1	S	L5	L4	L3	L2	L1	L	I1	I	H2	H1	H	F		Y	Weight kg (lbs)

08.39.60	X	Y	Z
----------	---	---	---

Pilot ratio

= 03 4.2:1

Port sizes	V1 - V2	C1 - C2	M
= 02	G 3/8	Ø 9 (0.35)	G 1/4
= 03	G 1/2	Ø 9 (0.35)	G 1/4

	SPRINGS		
	Adj. pressure range bar (psi)	Pres. increase bar/turn (psi/turn)	Std. setting Q=5 (l/min.) bar (psi)
= 20	60-210 (870-3000)	63 (914)	200 (2900)
= 35	100-350 (1450-5000)	138 (2001)	350 (5000)

Tamper resistant cap
code 11.04.23.002
R930000752



Type	Material number
083960030220000	R930006768
083960030235000	R930006444
083960030320000	R930006772
083960030335000	R930006773

[illegible]